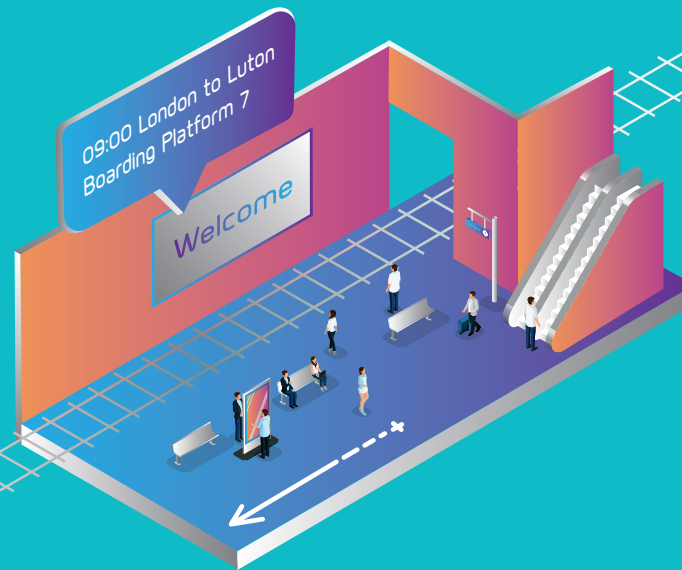


Brighter ideas  
Bigger trains  
Better stations

## Welcome

We've transformed north-south travel through London to meet the huge rise in demand from passengers. With better stations, new trains and improved connections we've upgraded one of the busiest and most congested parts of the rail network.



## New trains

We've introduced a fleet of 115 new trains, which are longer, more spacious and more energy efficient.

These trains have more luggage space and improved accessibility for buggies and wheelchair users. There's also air conditioning and real-time displays to help you find empty seats or a toilet.

## Better stations

The new bigger, better London Bridge station provides around 55 million passengers each year with more space, easier connections, more lifts and escalators plus a wide range of shops.

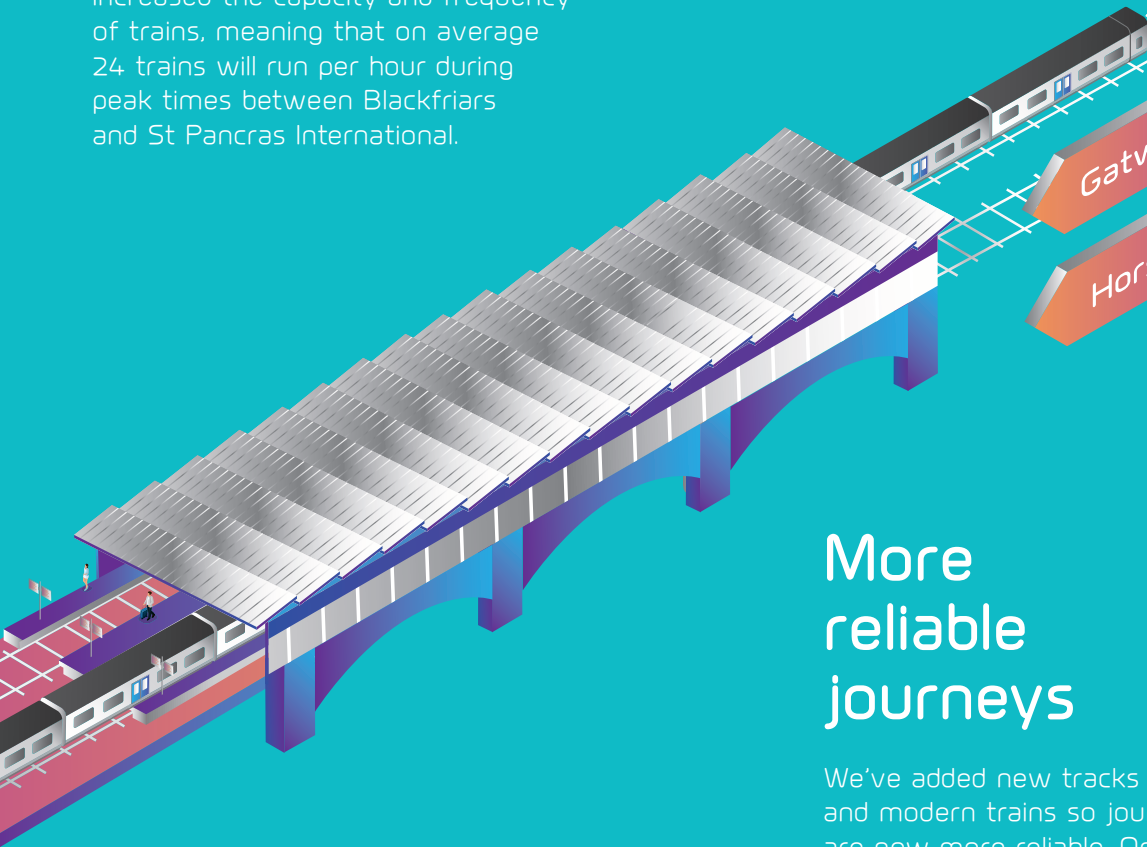


THAMESLINK  
PROGRAMME

Transforming north-south  
travel through London

# Improved connections

To relieve congestion, we've increased the capacity and frequency of trains, meaning that on average 24 trains will run per hour during peak times between Blackfriars and St Pancras International.



# More reliable journeys

We've added new tracks and modern trains so journeys are now more reliable. On the approach to London Bridge station, we've also untangled the tracks, cutting delays and reducing the time trains wait for platforms to clear.

# New technology

By updating the railway network with the latest technology, we've been able to run more frequent trains on existing track. Future development of a digital traffic management system will mean further improvements in performance and reliability.



# New infrastructure

With over 40km of new track, 147 new switches and crossings, 128 major track changes and 9 major resignalling changes we've been able to reduce congestion and increase capacity.

