

# Thameslink Programme

## Health & Safety – Good Practice 008

### PK Night Vision (Pole Inspection Camera) - at London Bridge Redevelopment

#### Overview/Description

Due to the nature of the project, there is always a need to carry out inspections at high level. Whether it be checking voids, arch inspections or bridge deck inspections etc.

The PK night vision pole camera allows quick and easy inspections up to a height of 10m. The camera produces photos and videos to 720 x 480 quality, and with the monitor it allows the user to get a clear image of the camera from ground level.

#### Features:

- The camera system at full extension with accessories only weight approx. 3Kg
- High quality images can be produced in areas with no natural light
- User will have a live image on the connected monitor
- Time and date stamped images or videos
- Less than two minutes set up time needed
- Photos and videos can be downloaded straight onto a USB stick or memory card



Traditional method using scaffold to inspect

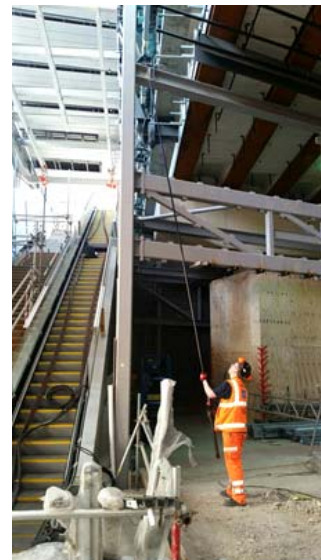
#### Benefits

The camera will speed up inspections site wide as it removes the need for scaffolding access or working out of a MEWP therefore reducing safety risk to individuals.

Nightvision mode allows a clear image to be taken in darkness meaning it can also be used for surveys and inspection on nightshift.

#### Easy to Use

Can be set up in less than 2 minutes.



Improved method using cameras on poles

#### Supplier Information

4K Systems  
Colliers Street Works  
Colliers Street  
Oswaldtwistle  
Lancashire  
BB5 3DE NGDOM  
Tel: 0161 949 5315 sales@4kam.com